



SRJ CERTIFICATION SERVICES PRIVATE LIMITED

CIN: U71100MH2023PTC400199

www.srjcertificationservices.com

GSTIN: 27ABKCS4930M1ZS

Regd. Office: BASEMENT SHOP NO.5, SUNSHINE COMMERCIAL COMPLEX, BLDG. No.3, NEAR RAILWAY STATION, NALLASOPARA (E), TAL-VASAI, DIST. PALGHAR, MAHARASHTRA-401209. Email: srjcertificationservices@gmail.com, srjassociates2010@gmail.com, Mobile: 8999039398 / 9545771018

PROJECT REPORT NUTRACEUTICAL FACILITY



For
EASY RAW MATERIALS PVT. LTD.

Plot No. F-1, Sector-7, JNPA,
SEZ Area Village Sonari & Jaskhar,
Tal. Uran, Dist. Raigad.,
Maharashtra.

Date: 28th May 2025



SANTOSH .R. JAISWAR - A. M. I. Mech. E (I), D.M.E, P.E., F.I.I.V. Govt. Recognized Chartered Mech. Engineer/Approved Valuer- PMV
Membership No: 77571, Institution of Mechanical Engineers (I), Navi Mumbai. (30th March-2010)

CONTENTS

1	PROJECT DETAILS.....	3
2	PROJECT LOCATION.....	4
3	EZRM OPERATIONS OVERVIEW.....	5
4	LAND DETAILS.....	5
5	SITE LOCATION.....	6
6	PROJECT DESIGN BASIS.....	7
7	NUMBER OF EMPLOYEES.....	8
8	CONFLICT OF INTEREST.....	8
9	DEVELOPMENT ON THE MANUFACTURING SITE.....	8
10	CONSTRUCTION ACTIVITIES.....	9
11	PLANT AND MACHINERY.....	10
12	FACILITY DETAILS.....	10
13	UTILITIES FOR EZRM AT JNPA SEZ.....	11
14	MANUFACTURING FACILITY AT EZRM (JNPA SEZ).....	12
15	MANUFACTURING STRATEGIES & PLAN.....	12
16	TENTATIVE DESIGN.....	13
17	MAJOR EQUIPMENT LIST.....	16
18	INSTALLATION AND SETUP OVERVIEW.....	18
18	PROJECT COSTING.....	19
19	TIMELINES.....	35
20	PLOT PLAN.....	37



1 PROJECT DETAILS

Easy Raw Materials Pvt. Ltd. (EZRM) is an emerging manufacturing company focused on providing high-quality raw materials and finished products to a variety of industries, including food, pharmaceuticals, and animal health. Our upcoming facility, located in the JNPA Special Economic Zone (SEZ), is strategically positioned to serve international markets with precision and efficiency. EZRM will specialize in a wide range of products such as vitamins, capsules, amino acids, and nutraceutical ingredients and supplements. Additionally, we will handle the packaging and labelling of all products, ensuring compliance with the highest industry standards.

Our vision is to create a state-of-the-art manufacturing facility that blends innovation with sustainability. We are committed to using advanced technology and automated systems to ensure consistent product quality and streamline our operations. By focusing on quality control, eco-friendly practices, and the development of skilled talent, EZRM is poised to become a trusted name in the global market.

As we prepare to launch our manufacturing operations, EZRM aims to build strong, long-lasting relationships with clients, suppliers, and stakeholders, while adhering to the best practices in quality, safety, and regulatory compliance. With a focus on meeting the evolving needs of industries, EZRM will be your trusted partner for reliable, sustainable, and innovative solutions in raw materials and finished products.

➤ EZRM was incorporated on **14th December 2020**

➤ **Registered office address:**

Office No. 403/404, 4th Floor, K.L. Accolade, 6th Road, TPS III, Santacruz (East), Mumbai, Maharashtra, India, 400055



2 PROJECT LOCATION

Location: JNPA SEZ

JNPA SEZ benefits from its strategic location near Mumbai, the economic hub of India, and its robust connectivity to major cities across the country through an extensive network of rail and roadways. Proximity to the port is a critical advantage for stakeholders, as it facilitates seamless trade and enhances the ease of doing business. To further strengthen this connectivity, several infrastructure projects are planned in and around the port area. These initiatives aim to improve accessibility, benefiting both trade operations and commuter traffic, while reinforcing JNPA's position as a key driver of economic growth.

Source: <https://www.jnport.gov.in/page/location/c3VwbldzMHkvRjQ1d0R5TWItVkpKQT09>

Key Advantages of JNPA SEZ for EZRM:

- **Strategic Location:** The proximity to the JNPA Port, one of the busiest ports in India, ensures easy access to international markets, significantly reducing transportation costs and time.
- **World-Class Infrastructure:** JNPA SEZ offers robust infrastructure, including roads, utilities, and communication networks, facilitating smooth business operations and minimizing logistics challenges.
- **Business-Friendly Environment:** The SEZ offers favourable business policies, including customs duty exemptions and tax benefits, making it an attractive location for companies looking to expand their global presence.
- **Connectivity:** With excellent connectivity to major highways and railways, the location ensures seamless movement of goods across India and to international destinations.
- **Skilled Workforce Availability:** The area benefits from a pool of skilled professionals and workers, ensuring EZRM can access the talent necessary for maintaining high manufacturing standards.
 - Nearest Railway Station: Approximately 5 km from JNPA SEZ
 - Nearest Airport: Around 50 km from Mumbai Airport
 - Nearest Port: Within the JNPA SEZ

The registered address of EZRM is located at

JNPA Special Economic Zone (SEZ),
Plot Number F1, Sector 7, Maharashtra.
Pin code: 400707



3 EZRM OPERATIONS OVERVIEW

The core focus of EZRM's facility at JNPA SEZ is its state-of-the-art manufacturing facility, dedicated to producing high-quality nutraceuticals and health supplements, such as tablets, capsules, and powdered formulations in jars and sachets.

The manufacturing facility encompasses:

- **Production:** Manufacturing a diverse range of nutraceuticals and health supplements, including:
 - **Tablets:** Customized formulations catering to various health and nutritional needs.
 - **Capsules:** High-capacity production to meet dietary and therapeutic demands.
 - **Jars:** Bulk packaging for powdered supplements.
 - **Sachets:** Convenient single-use packaging designed to maintain product freshness.
- **Procurement and Export:** Handling premium raw materials such as amino acids, vitamins, and nutraceutical ingredients for international markets.
- **Warehousing:** Modern storage solutions to maintain the quality and integrity of both raw materials and finished products.
- **Labeling and Packaging:** Advanced systems designed to meet global compliance standards and cater to diverse market requirements.

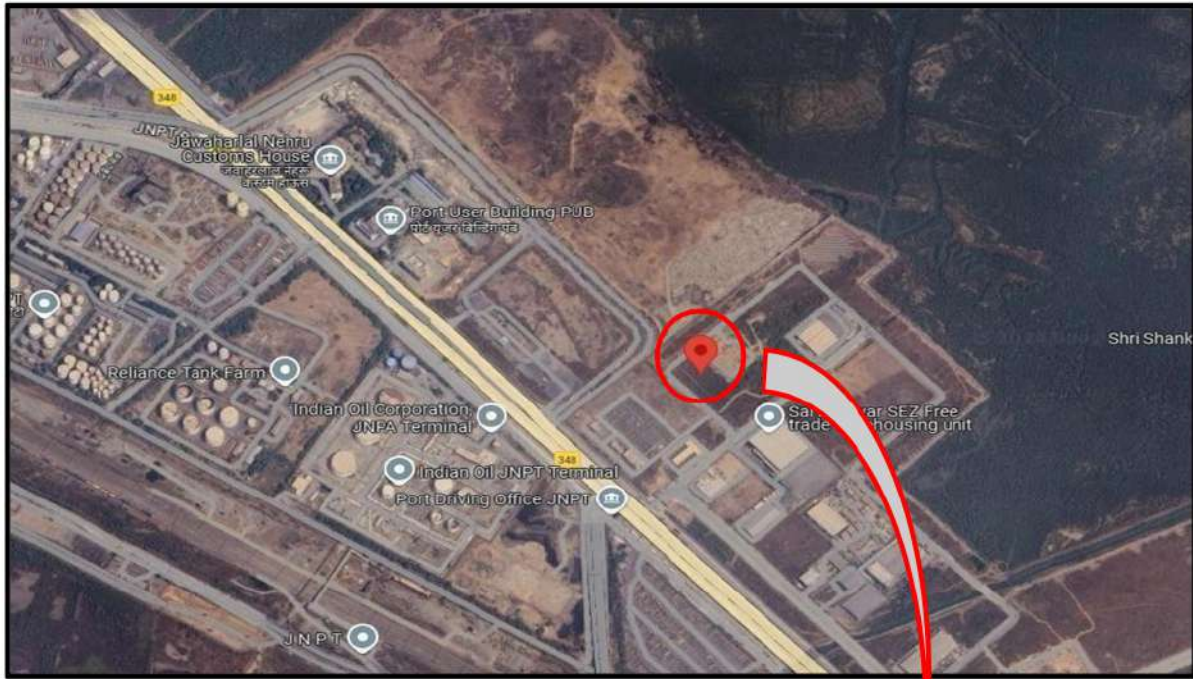
This integrated approach positions EZRM as a comprehensive solution provider for the nutraceutical industry, combining manufacturing excellence with logistics capabilities.

4 LAND DETAILS

- **Site Location:**
 - Address: Plot No. F-1, Sector-7, JNPA SEZ Area, Villages Sonari & Jaskhar, Tal. Uran, Dist. Raigad, Maharashtra.
 - Size of land: 4120 sq.m
- **Ownership Status:**
 - The land is on lease for 60 years. A supporting deed is available.



5 SITE LOCATION



6 PROJECT DESIGN BASIS

Easy Raw Materials Pvt. Ltd. (EZRM) is undertaking the establishment of a cutting-edge facility at JNPA SEZ to cater to manufacturing operations. The facility will be designed and developed to ensure compliance with international standards and the specific requirements of the SEZ framework.

6.1 MANUFACTURING OF FINISHED NUTRACEUTICALS & HEALTH SUPPLEMENTS

EZRM's integrated facility at JNPA SEZ is designed to be a comprehensive hub with a primary focus on its state-of-the-art manufacturing operations. The facility also includes warehousing, labeling, and packaging, ensuring a seamless and efficient supply chain.

In the **manufacturing facility**, the following operations are integrated:

- **Production:** Manufacturing a diverse range of nutraceuticals and health supplements, including:
 - **Tablets:** Customized formulations catering to various health and nutritional needs.
 - **Capsules:** High-capacity production to meet dietary and therapeutic demands.
 - **Jars:** Bulk packaging for powdered supplements.
 - **Sachets:** Convenient single-use packaging designed to maintain product freshness.
- **Warehousing:**
 - Procurement, storage, and export of high-demand raw materials, including amino acids, vitamins, and nutraceutical ingredients.
 - Modern storage systems are designed to safeguard sensitive materials and maintain quality.
- **Labeling and Packaging:**
 - Facilities equipped for efficient export preparation while ensuring material integrity.
 - Advanced systems to meet global compliance standards.
- **Innovation and Technology:**
 - Advanced machinery for precise formulations and efficient workflows.
 - Robust quality assurance systems to meet stringent industry benchmarks.

Key Features and Capabilities:

- **Product Forms:**
 - Tablets: Customized formulations for diverse health and nutrition needs.
 - Capsules: High-volume production to meet dietary and therapeutic demands.
 - Jars: Bulk packaging for powdered supplements.
 - Sachets: Convenient single-use packaging to maintain product freshness.
- **Production Capacity:**

It is projected to achieve an annual production capacity of:

 - 55 million capsules and 3,300 tonnes of powder
- **Processes and Compliance:**
 - Planned activities include powder filling, capsule filling, jar packing, pouch packing, sachet packing, and labelling.
 - The facility will adhere to GMP, FSSAI, and FDA standards to ensure the highest safety and quality.

- **Innovation and Technology:**

- The site will house advanced machinery for precise formulation and efficient workflows.
- A robust quality assurance system will be implemented to meet stringent industry benchmarks.

This facility underscores EZRM's commitment to innovation, sustainability, and global competitiveness, ensuring the production of world-class nutraceutical products.

7 **NUMBER OF EMPLOYEES**

The project is expected to create employment opportunities for approximately 60–70 skilled professionals, spanning management, technical, and production roles. EZRM is committed to fostering a collaborative work culture, ensuring efficiency and continuous improvement.

8 **CONFLICT OF INTEREST**

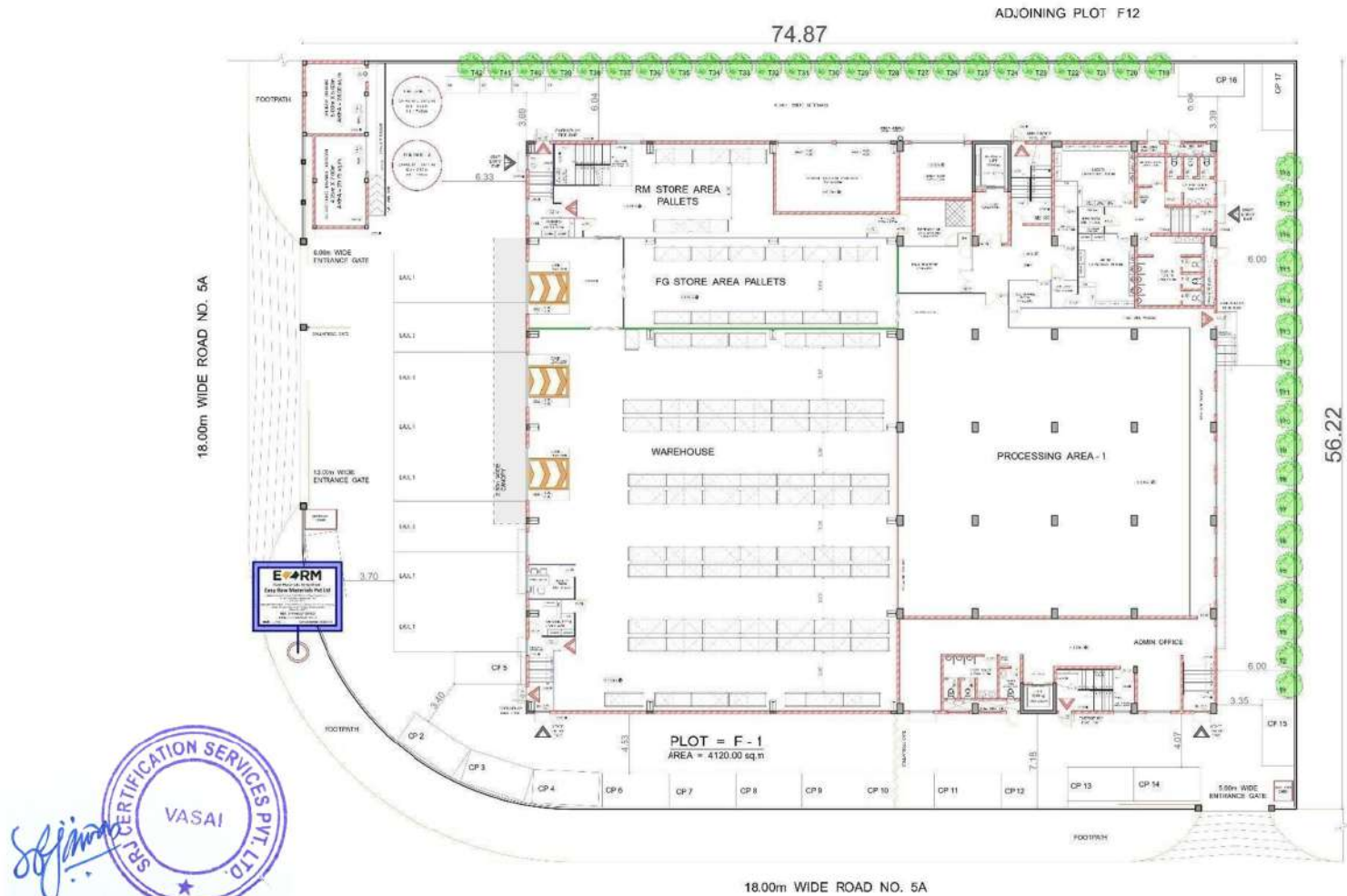
EZRM maintains a strong commitment to ethical practices and corporate governance. The company has established stringent policies to prevent conflicts of interest, ensuring transparency and accountability across all operations.

9 **DEVELOPMENT ON THE MANUFACTURING SITE**

At Easy Raw Materials Pvt. Ltd. (EZRM), significant developments are planned to establish a modern and efficient manufacturing facility at JNPA SEZ. These developments include both construction activities and the acquisition of essential plant and machinery to support our operations.



CONSTRUCTION ACTIVITIES: The image below illustrates the layout of the plot.



PROPOSED SITE LAYOUT



The manufacturing site is set for comprehensive development to establish a state-of-the-art facility adhering to global standards for production. The proposed facility will feature a G+3 structure with the following layout:

- **Ground Floor:** Includes an administrative reception area, changing rooms for the manufacturing zone, and a packaging hall.
- **First Floor:** The first floor is dedicated to processing operations, including dispensing, milling, sifting, blending, and housing an Air Handling Unit (AHU) technical area. Due to space constraints on the first floor after allocating area for processing activities, the AHUs for the critical powder processing zone are positioned here, while additional AHUs are placed on the third floor. This ensures optimal airflow and compliance with cleanroom requirements for critical operations.
- **Second Floor:** The second floor is reserved for future expansion, specifically for the manufacturing of Effervescence Tablets, Liposomal Ingredients, and Microencapsulated Ingredients. This floor is designed to accommodate additional processing activities as the facility scales up its production capabilities.
- **Third Floor:** The third floor is designed to house administrative offices, a Quality Control (QC) laboratory, an AHU technical area, and additional processing zones for future expansion. The placement of AHUs on this floor complements the first-floor setup, ensuring efficient air handling and cleanroom compliance across the facility. The manufacturing building will be constructed using reinforced cement concrete (RCC), with internal partitions made of cleanroom-compliant materials to effectively segregate the operational areas. A dedicated HVAC system will serve specific zones to maintain environmental control and minimize cross-contamination risks.

The warehouse area, in contrast, will be constructed using a Pre-Engineered Building (PEB) structure. A specialized ventilation system will be installed to ensure optimal conditions for RM and FG storage.

11 PLANT AND MACHINERY

To ensure operational efficiency and product quality, the company plans to procure modern plant and machinery, including:

- Equipment for sifting, milling, blending, granulation, & encapsulation, catering to the manufacturing needs.
- Advanced labelling and packaging machines for export markets.
- Material handling systems such as lifts and conveyors to streamline operations and improve efficiency.
- Precision weighing balances and analytical tools to uphold strict quality control standards.

12 FACILITY DETAILS

1. Administrative Block

- Key departments, including operations, finance, HR, and management.
- Meeting rooms and collaborative spaces to facilitate efficient decision-making and planning.

2. Manufacturing Block

- Production Zones:
 - Dedicated areas for powder sifting, milling, blending, granulation & capsule filling.
 - High-capacity production lines to support scalability and market demand.
- Packaging and Labelling:
 - State-of-the-art equipment for labelling, pouch packing, and jar filling.
 - Systems to meet export standards and SEZ compliance.

- Quality Control (QC) Lab:
 - Advanced analytical equipment to maintain product quality.
 - Separate storage for reference samples and stability testing.

3. Storage Facilities

- Raw Material Storage:
 - Controlled environments for sensitive materials like amino acids and vitamins.
- Finished Goods Storage:
 - Warehousing solutions to accommodate products awaiting dispatch.

4. Utilities and Support Infrastructure

- Power distribution systems with Compact substation.
- Water pipelines for industrial use, steam lines for processing, and compressed air systems.
- HVAC system to cater requirement of classified powder processing areas.
- Fire safety systems, including alarms, sprinklers, and hydrants.

5. Logistics and Land Development

- Internal roads and loading docks for seamless material handling and transportation.
- Landscaping to enhance aesthetics and environmental compliance.

6. Sustainability Features

- Rainwater harvesting and wastewater treatment systems to promote eco-friendly operations.

13 UTILITIES FOR EZRM AT JNPA SEZ

EZRM's manufacturing facility at the JNPA Special Economic Zone (SEZ) will benefit from robust and reliable utilities, ensuring seamless operations. The SEZ is equipped with state-of-the-art infrastructure to support industrial activities, including:

Land: The total SEZ spans 277.38 hectares of freehold land, owned by JNPA. Land is available on a 60-year leasehold basis, with eligibility for further extensions as per port land policy guidelines. The transparent e-tender cum auction process ensures fair allotment of land to investors. We have an area of 4120 sq.m **Source:** <https://acrobat.adobe.com/id/urn:aaid:sc:AP:76ac03dc-c812-4b2a-ac52-6adaba3f0a7d>

Power Supply: A dedicated power supply of 1 MVA is available for units within the SEZ, ensuring uninterrupted operations for manufacturing processes. Provided by JNPA and will not be sourced from local authority. **Source:** SEZ Registration Agreement

Water Supply: The SEZ provides a water supply of 1 MLD, meeting the industrial requirements of manufacturing units. It will be provided by JNPA and will not be sourced from local authority. **Source:** SEZ Registration Agreement

Road Infrastructure: The SEZ features a main road with a width of 60 meters, equipped with stormwater drains and streetlights on both sides. Internal roads are 45 and 30 meters wide, facilitating smooth transportation within the zone. **Source:** <https://acrobat.adobe.com/id/urn:aaid:sc:AP:76ac03dc-c812-4b2a-ac52-6adaba3f0a7d>

Additional Features: The SEZ maintains a greenery ratio of 20% of the total land area, promoting a sustainable environment. It is located approximately 5 km from the container

landing area of JNPA, offering easy access to port facilities. Railway connectivity to other industrial areas, such as Panvel and JNPA, further enhances logistical advantages.

14 **MANUFACTURING FACILITY AT EZRM (JNPA SEZ)**

EZRM's manufacturing facility, located in the JNPA Special Economic Zone (SEZ), is set to focus on a diverse range of products, specifically in two primary categories:

1. **Food Preparations & Supplements:**

- Manufacturing of high-quality food preparations, including functional foods, vitamins, and nutritional supplements.
- Key focus on creating products with consistent quality for international markets, ensuring compliance with food safety standards and regulations.

2. **Nutraceuticals & Veterinary Products:**

- Production of vitamins, minerals, and supplements for human health, as well as specialized formulations for animal nutrition and health.
- Emphasis on quality control, adhering to GMP (Good Manufacturing Practices) and other relevant certifications.

3. **Packaging & Labelling:**

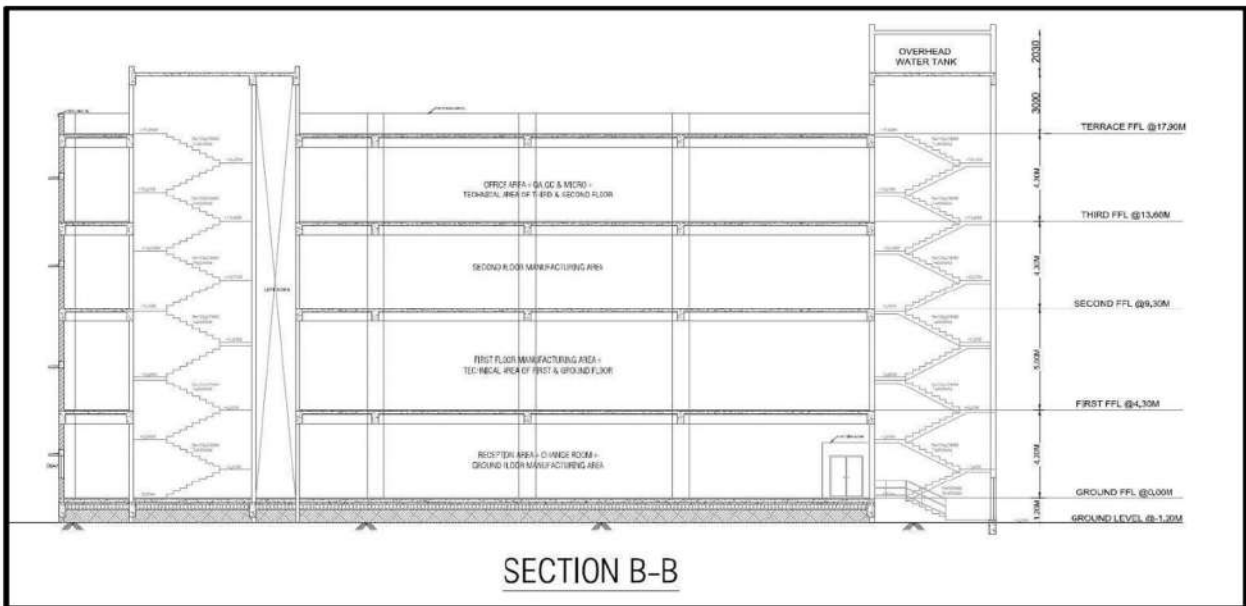
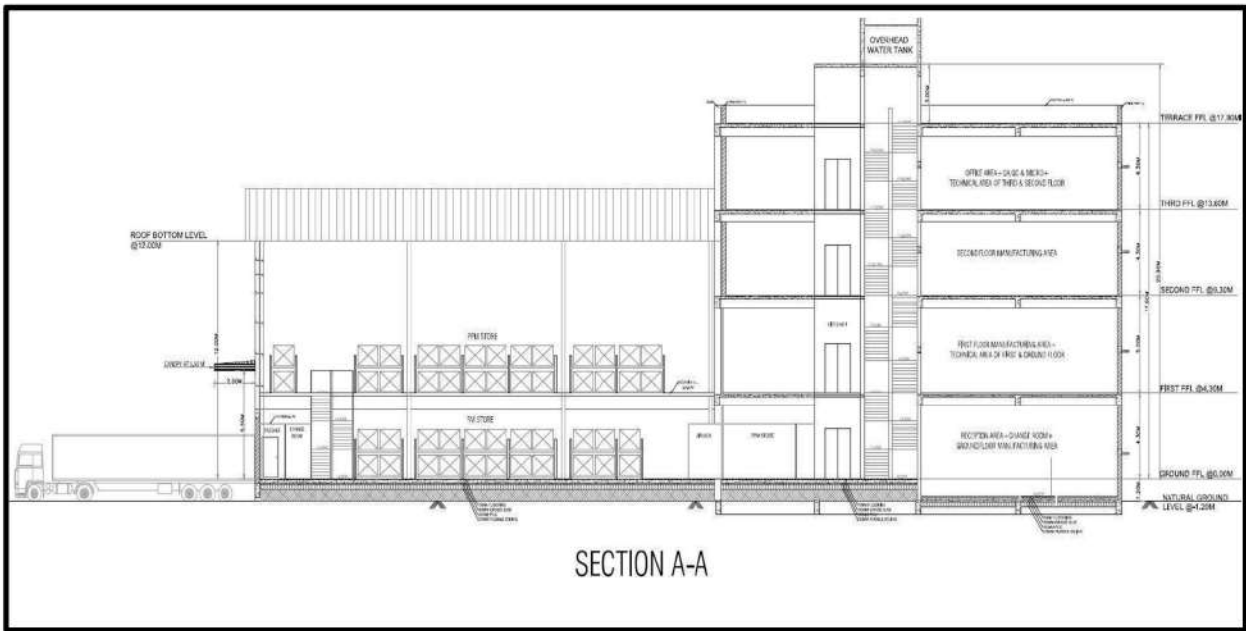
- EZRM will also be responsible for the packaging and labelling of all products, ensuring that the packaging meets international standards for export.

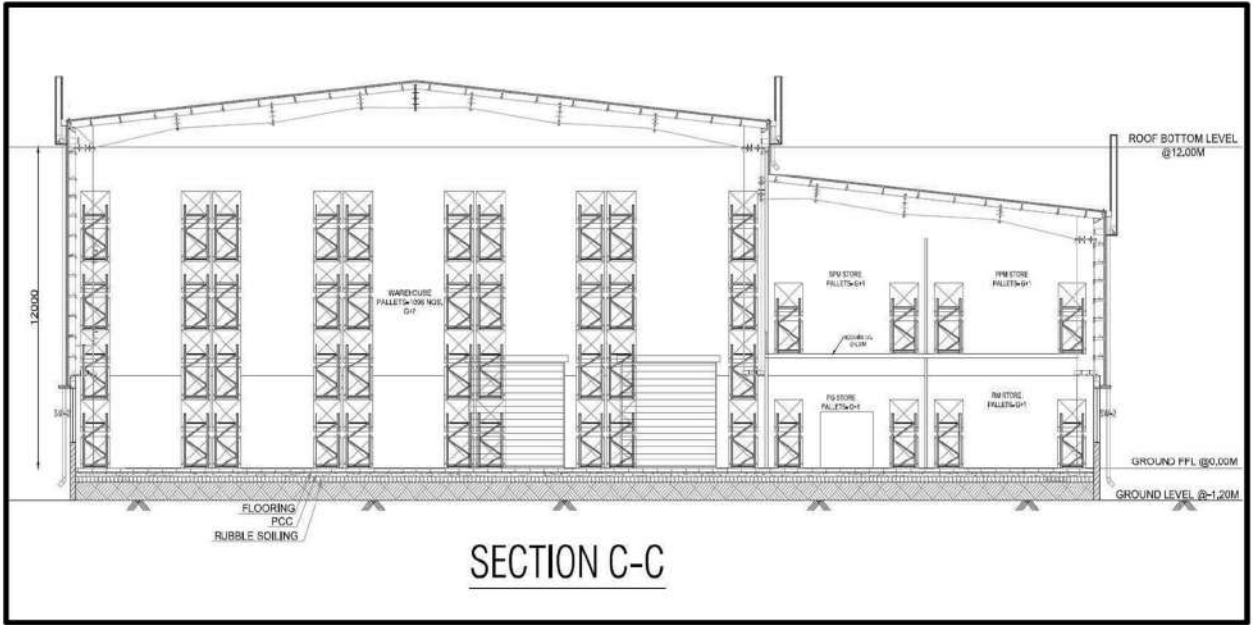
15 **MANUFACTURING STRATEGIES & PLAN**

- **Quality Assurance:** Ensuring rigorous quality control through automated processes, along with continuous testing and monitoring of raw materials and finished goods.
- **Sustainability:** Implementing eco-friendly practices in the production process, focusing on waste reduction and energy-efficient operations.
- **Automation & Technology Integration:** Using cutting-edge machines such as material lifts, weighing balances, encapsulation machines, and packaging machinery to streamline production and minimize human error.
- **Skilled Workforce & Training:** Employing a skilled workforce with continuous training in modern manufacturing techniques to maintain efficiency and safety.
- **Supply Chain Optimization:** Establishing robust supply chain management to ensure timely procurement of raw materials, and efficient distribution of finished products to global markets.










17 MAJOR EQUIPMENT LIST

Sr. No.	Equipment Name	Capacity	UOM	Qty	Purpose
1	Material Lift	2	Ton	1	Ensures safe and efficient movement of raw materials and finished goods while preventing contamination.
2	Cone Mill with Non FLP motor & Electricals, provided with screen of 2 mm	300	kg/hr	1	Ensures consistent quality, solubility, and bioavailability of products.
3	SS 316 Intermediate Product Container With detachable trolley having PU Coated castor Nylon Wheel	250	Lit	2	Enables hygienic and contamination-free movement of materials between processes.
4	IBC Bin Product Parts SS-316 Other SS 304 2. Fully openable butterfly valve at outlet 3. Finish - Internal Mirror, External Matt 4. Provided with detachable trolley with PU Coated castor Nylon Wheel	1250	Lit	1	Enables hygienic and contamination-free movement of materials between processes.
5	IBC Bin Product Parts SS-316 Other SS 304 2. Fully openable butterfly valve at outlet 3. Finish - Internal Mirror, External Matt 4. Provided with detachable trolley with PU Coated castor Nylon Wheel	1250	Lit	2	Enables hygienic and contamination-free movement of materials between processes.
6	SS 316 Intermediate Product Container With detachable trolley having PU Coated castor Nylon Wheel	650	Lit	2	Enables hygienic and contamination-free movement of materials between processes.
7	Bin Blender - Roller Type – GMP Model Single Column Mounted Support complete with Drive Unit and carriage for having, a) Built in Hydraulic Operated lifting arrangement b) Control Panel, AC Drive etc. (With out Bins) c) Service Floor Mounted MCC Panel in Powder coated encloser and Operator consule Manufacturing area mounted in SS 304 d) Finish - Internal Mirror, External Mat e) Non FLP Motor, Electricals and Control panel.	2000	Lit	1	Ensures uniformity and homogeneity of product blends.



8	SS 316 Intermediate Product Container With detachable trolley having PU Coated castor Nylon Wheel	250	Lit	2	Enables hygienic and contamination-free movement of materials between processes.
9	IBC Bin Product Parts SS-316 Other SS 304 2. Fully openable butterfly valve at outlet 3. Finish - Internal Mirror, External Matt 4. Provided with detachable trolley with PU Coated castor Nylon Wheel	1250	Lit	2	Enables hygienic and contamination-free movement of materials between processes.
10	Fluid Bed Processor - CGMP with vertical explosion and explosion duct extension upto the service floor, having standard electricals and standard motor and the following features: a) Insulated APU with tri-level filtration using 10 microns for air filtration, 3 microns for secondary air filtration and 0.3 micron for final air filtration through HEPA with differential pressure gauges and radiator coil for steam heating. b) Blower with standard electricals c) Online slapping device d) Pneumatically operated bag shaking arrangement. e) 1 No. product container with air distribution plate - perforated screen. f) Exhaust filter plenum with police filter - EU - 7 and HEPA filter in M.S. painted casing before blower. Insulated with cover.	120	kg	1	Enhances granule characteristics, ensuring better compression and product stability. 
11	Solution Manufacturing Vessel: a) Cylindrical vessel with conical bottom - 125 Ltrs capacity, Jacketed & Insulated b) Pneumatically Operated Stirrer c) The loading would be done Manually. d) Non FLP Motor and Electricals.	125	Lit	1	Critical for producing syrups, suspensions, or coating solutions.
12	SS 316 Intermediate Product Container With detachable trolley having PU Coated castor Nylon Wheel	650	Lit	1	Enables hygienic and contamination-free movement of materials between processes.
13	Automatic Capsule Filling Machine with line machine	25000	Cap/hr	1	Ensures precise dosing and efficient capsule filling.
14	Pouch Packing Machine (Powder)	30-35	1kg Pouch/min	1	Ideal for single-serve or bulk pouch packaging.

15	Jar/Container Packing Machine (Powder)	40-45	1kg Jar/min	1	Used for packing nutritional powders like protein supplements in jars.
16	Pouch Packing Machine (Powder)	35-40	0.5kg Pouch/min	1	Ideal for single-serve or bulk pouch packaging.
17	Pouch Packing Machine (Powder)	55-60	0.1kg Pouch/min	1	Provides precise dosing for single-use sachets, commonly used for OTC products.

18 INSTALLATION AND SETUP OVERVIEW

1. Civil Construction

The civil construction scope includes the development of foundational structures, civil works, and external infrastructure. This ensures a strong base for all subsequent installations and provides a reliable foundation for facility operations, enhancing safety, durability, and functionality across the site.

2. Clean Room Modular Partition

Modular partitions will be installed to create clean room environments essential for maintaining strict contamination control. This ensures that products and processes are carried out in regulated environments, improving quality, compliance with industry standards, and reducing the risk of contamination in sensitive manufacturing areas.

3. Manufacturing Process Equipment

The installation of manufacturing process equipment is integral to the production workflow. This equipment will optimize production efficiency, maintain consistent product quality, and streamline operations, resulting in enhanced productivity and minimized downtime.

4. General Utility Equipment

General utility equipment, including systems for water treatment, compressed air, and power generation, will be installed. These utilities are critical for the continuous operation of the facility, ensuring that essential resources are readily available, thus improving operational reliability and energy efficiency.

5. HVAC System

The HVAC (Heating, Ventilation, and Air Conditioning) system will be installed to maintain optimal environmental conditions within the facility. This system will ensure controlled temperature, humidity, and air quality, thereby enhancing comfort, safety, and productivity for personnel working within the space.

6. Electrical Facility

The electrical facilities, comprising power distribution panels, lighting systems, and backup power solutions, will be set up to ensure a stable and continuous power supply throughout the facility. This will enhance operational continuity, reduce the risk of power outages, and improve overall system reliability.

7. Mechanical & Piping Facility

The mechanical and piping systems, including the installation of pipes, valves, and related mechanical equipment, will be designed to ensure the efficient distribution of water, gas,



and other essential fluids. These systems are crucial for maintaining the operational efficiency of manufacturing processes and ensuring system reliability.

8. Fire Fighting Facility

Firefighting systems, including fire sprinklers, alarms, and extinguishing systems, will be installed throughout the facility. These safety systems are essential for minimizing the risk of fire hazards, ensuring rapid response in emergencies, and protecting personnel, equipment, and property from fire-related damages.

9. Racking System

Racking systems will be designed and installed to provide efficient storage solutions within the facility. These systems will improve space utilization, organize materials and products more effectively, and streamline inventory management processes, thus reducing storage costs and improving operational efficiency.

PROJECT COSTING

17.1 TOTAL PROJECT COSTING

r. No.	Particulars	Total Cost in INR	Total Cost in Mio INR	Remark
A	Infrastructure & Equipment			
1	Civil Cost	164,715,290	164.72	
2	Clean room Modular Partition Cost	25,016,663	25.02	
3	Manufacturing process equipment Cost	52,075,500	52.08	
4	General Utility Equipment Cost	9,126,000	9.13	
5	HVAC Cost	33,901,273	33.90	
6	Electrical Cost	26,477,399	26.48	
7	Mechanical & Piping Cost	1,360,000	1.36	
8	Fire Fighting Cost	6,718,761	6.72	
9	Racking System.	4,465,000	4.47	
10	Miscellaneous Cost	6,462,000	6.46	
A	Total Cost (Infrastructure & Equipment)	33,03,17,886	330.33	
B	Administration cost (5 % of A)	1,65,15,894	16.52	
	Total Cost of Project (A+B)	34,68,33,780	346.85	

NOTE:

Miscellaneous costs include expenses such as travel for site visits, inspections, or meetings; hotel stays and meal expenses for project staff; government or regulatory permits; legal consultation and inspection fees; utilities like power, water, or fuel used during construction or commissioning; and minor consumables such as cleaning supplies, bolts, or adhesives.



COSTING-CIVIL CONSTRUCTION

Sr. No.	Description	Quantity	UOM	Rate	Total Amount	Quotations	Date of Quotation	Validity of Quotation
1	Soil Excavation Upto 3m	2890	Cu.m	340	9,82,600	M/s. Thakur Infraprojects Pvt. Ltd	15-04-2025	180days
2	Providing Well Compacted Single/ Double Rubble Soling	3250	Sq.m	700	22,75,000	M/s. Thakur Infraprojects Pvt. Ltd	15-04-2025	180days
3	Providing Piling, This Item Should Include Steel, Incase & Concrete Considering 23 to 25m Depth Of Each Pile			-	-			
3.1	500mm Dia	851	Rmt	11,700	99,45,000	M/s. Thakur Infraprojects Pvt. Ltd	15-04-2025	180days
3.2	600mm Dia	1380	Rmt	13,350	1,84,23,000	M/s. Thakur Infraprojects Pvt. Ltd	15-04-2025	
4	Providing Pile Socket, This Item Should Include Steel & Concrete Considering 2 to 2.4m Depth for Each Pile			-	-			
4.1	500mm Dia	74	Rmt	13,000	9,62,000	M/s. Thakur Infraprojects Pvt. Ltd	15-04-2025	180days
4.2	600mm Dia	144	Rmt	14,340	20,64,960	M/s. Thakur Infraprojects Pvt. Ltd	15-04-2025	
5	Providing PCC Grade M15, This Item Should Include Foamwork & Cement	352	Cu.m	7,700	27,10,400	M/s. Thakur Infraprojects Pvt. Ltd	15-04-2025	180days
6	RCC In Column, Footing, Beam, Slab For Below Mentioned Grade Of Concrete. This Item Should Include Formwork, Shuttering, Cement & Steel			-	-			
6.1	For Grade M25	165	Cu.m	22,250	36,71,250	M/s. Thakur Infraprojects Pvt. Ltd	15-04-2025	180days
6.2	For Grade M30	2055	Cu.m	23,600	4,84,98,000	M/s. Thakur Infraprojects Pvt. Ltd	15-04-2025	
7	Backfilling/ Filling	3787	Cu.m	600	22,72,200	M/s. Thakur Infraprojects Pvt. Ltd	15-04-2025	180days
8	Providing Peb Structure With Steel Framing Including Tin Sheet, Z Purlin, Rafter, Louvers, Rain Water Downtake, Necessary Monkey Ladder, Framing Of Door & Windows	1204	Sq.m	11,900	1,43,27,600	M/s. Thakur Infraprojects Pvt. Ltd	15-04-2025	180days
9	Providing Structure Platform Including Beam, Column, Chequered Plate, Foundation Bolts, Railing & Staircase	392	Sq.m	12,740	49,94,080	M/s. Thakur Infraprojects Pvt. Ltd	15-04-2025	180days
10	Constructing Block/ Brick Work In Super-Structure, Including Staging At All Height	810	Cu.m	10,000	81,00,000	M/s. Thakur Infraprojects Pvt. Ltd	15-04-2025	180days
11	Providing Plumbing Items Including Wash Basin, Urinals, Toilet Seat With Necessary Fittings	15	Nos.	1,20,000	18,00,000	M/s. Thakur Infraprojects Pvt. Ltd	15-04-2025	180days
12	Providing Plaster			-	-			
12.1	In Single Coat (12mm Thick)	3353	Sq.m	600	20,11,800	M/s. Thakur Infraprojects Pvt. Ltd	15-04-2025	180days
12.2	In Double Coat (20mm Thick)	2964	Sq.m	750	22,23,000	M/s. Thakur Infraprojects Pvt. Ltd	15-04-2025	
13	Providing Windows & Doors With Granite Framing	228	Sq.m	9,600	21,88,800	M/s. Thakur Infraprojects Pvt. Ltd	15-04-2025	180days
14	Providing Rolling Shutter			-	-			



COSTING-CIVIL CONSTRUCTION

Sr. No.	Description	Quantity	UOM	Rate	Total Amount	Quotations	Date of Quotation	Validity of Quotation
14.1	1000 X2100mm	2	Nos.	41,000	82,000	M/s. Thakur Infraprojects Pvt. Ltd	15-04-2025	180days
14.2	1500 X2100mm	2	Nos.	65,000	1,30,000	M/s. Thakur Infraprojects Pvt. Ltd	15-04-2025	
15	Providing Motorised Rolling Shutter			-	-			
15.1	4000 X4000mm	3	Nos.	3,50,000	1,05,000	M/s. Thakur Infraprojects Pvt. Ltd	15-04-2025	180days
16	Providing High Speed Door			-	-			
16.1	1800 X2500mm	3	Nos.	4,50,000	13,50,000	M/s. Thakur Infraprojects Pvt. Ltd	15-04-2025	180days
17	Flooring			-	-			
17.1	RCC Flooring With Tremix, With Hardner, RMC M25 Grade With VDF Of 200mm Thickness	1240	Sq.m	3,250	40,30,000	M/s. Thakur Infraprojects Pvt. Ltd	15-04-2025	180days
17.2	Vitrified	750	Sq.m	2,400	18,00,000	M/s. Thakur Infraprojects Pvt. Ltd	15-04-2025	
17.3	Polished Kota	130	Sq.m	1,800	2,34,000	M/s. Thakur Infraprojects Pvt. Ltd	15-04-2025	
17.4	Granite	186	Sq.m	2,500	4,65,000	M/s. Thakur Infraprojects Pvt. Ltd	15-04-2025	
17.5	IPS (Indian Patent Stone) + Epoxy Paint	570	Sq.m	1,600	9,12,000	M/s. Thakur Infraprojects Pvt. Ltd	15-04-2025	
17.6	IPS (Indian Patent Stone) + Epoxy Flooring	1800	Sq.m	2,800	50,40,000	M/s. Thakur Infraprojects Pvt. Ltd	15-04-2025	
17.7	Water Proofing	960	Sq.m	1,800	17,28,000	M/s. Thakur Infraprojects Pvt. Ltd	15-04-2025	
18	Painting With Synthetic Enamel Paint Including Primer & Base Coat, With Staging At All Heights	6070	Sq.m	690	41,88,300	M/s. Thakur Infraprojects Pvt. Ltd	15-04-2025	180days
19	Proving Sewage System Including Chambers Frame & Lid, Sewage Pipe	130	Rmt	3,500	4,55,000	M/s. Thakur Infraprojects Pvt. Ltd	15-04-2025	180days
20	Road Work			-	-			
20.1	Excavation, Soling & PCC	1353	Sq.m	1,900	25,70,700	M/s. Thakur Infraprojects Pvt. Ltd	15-04-2025	180days
20.2	Steel & Concrete	1353	Sq.m	3,500	47,35,500	M/s. Thakur Infraprojects Pvt. Ltd	15-04-2025	
21	Providing 4mm ACP Sheet Of Metallic Finish With Necessary Frame Work	1152	Sq.m	4,500	51,84,000	M/s. Thakur Infraprojects Pvt. Ltd	15-04-2025	180days
22	Providing Modular Kitchen Including Countertop, Wall Unit & Kitchen Trolley	1	Lot	5,00,000	5,00,000	M/s. Thakur Infraprojects Pvt. Ltd	15-04-2025	180days
23	Providing Furniture For Office Area Including Work Stations, Cabins With Basic Interior	1	Lot	23,30,000	23,30,000	M/s. Thakur Infraprojects Pvt. Ltd	15-04-2025	180days
24	Motorised Sliding Gate Including Motor & Rail	54	Sq.m	22,000	11,88,000	M/s. Thakur Infraprojects Pvt. Ltd	15-04-2025	180days
25	Providing Green Area Including Trees, Soil & Tree Plantation	110	Sq.m	2,400	264,000	M/s. Thakur Infraprojects Pvt. Ltd	15-04-2025	180days
TOTAL					16,47,15,290			



COSTING-CLEANROOM MODULAR PARTITION

Sr.No	ITEM DESCRIPTION	QTY	UNIT	Supplyrate	SupplyAmount	Installation rate	Installation Amount	Purpose	Quotations	Date of Quotation	Validityof Quotation
1	Wall Panels - Progressive / Non-Progressive Type										
	Wall partitions will be composite construction of two skins PCGI/PCGI 50mm thick over an aluminum frame work with sealed and insulated interior. The self-supporting internal wall are constructed with an interior aluminum framework. Th Partition seams are sealed by silicone with a perfectly flus finish. Insulation material is sandwiched between the two ski layers and sealed from the exterior by the aluminum framework. The movable wall includes: a) PUF insulation 40 ±2 Kg/m3 b) Aluminum framework c) Siliconsealant (Clear, White, Winsil Gray)	3452	Sq,Mtr	2990	1,03,21,480	359	12,39,264	Ensure a dean and contaminant-free environment. Maintainsmooth, non-porous surfaces thatare easy to clean and disinfect. Support compliance withGMP and other regulatory standards. Facilitate modular cleanroom designs for easy expansion or modifications.	Ms.IPMSEngineers Pvt.Ltd	09-01-2025	180 days
2	Ceiling Panels										
2.1	Non-Walkable Ceiling Panels will be 50 thick and will have composite construction of two skins of PCGI / PCGI	1230	Sq,Mtr	2990	36,77,700	359	4,41,570	Provide a smooth, cleanable surface to prevent partide accumulation. Support:HEPA filter housings and diffusers for maintaining air quality. Integrate with lighting systems for proper illumination.	Ms.IPMSEngineers Pvt.Ltd	09-01-2025	180 days
3	Grid Ceiling										
	Supply & Installation of 10 mmthick Calcium Silicate Exposed Grid Ceiling of 600 x 600mm grid as per approved design. Quote to include "T" pre-coated steelangle, nylon sleeves and wood screws(450 mm C/C).Main "T" section with pre-coated steel, and "H" notches (at 300 mm C/C), metal rowl plug, soffit cleat, level clip, G.I. wire, etc. Also to include Scaffolding if any, MEP Cutouts complete.	1656	Sq,Mtr	1840	30,47,040	221	3,65,976	Simplifies installation and maintenance of HVAC and lighting components. Allows easy access to services above the ceiling for maintenance. Ensures structural integrity and alignment of ceiling panels.	Ms.IPMSEngineers Pvt.Ltd	09-01-2025	180 days
4	Doors										
	Clean room doors with 40mm thick PUF insulation and PCGI on bothsides with leaf and frame, view glass, door closer, kick plate, pushplate, door closure, automatic door bottom seal, double side operated lock and key for the doors etc							Maintain air pressure differentials between classified and non-classified areas. Ensure smoothsurfaces with flush finishes to prevent particle accumulation. Support interlock systems for airlock areas to prevent cross-contamination. Incorporate self-closing mechanisms and seals for airtight functionality.	Ms.IPMSEngineers Pvt.Ltd	09-01-2025	180 days
4.1	1000x2100mm(Single leaf)	69	Nos.	21839	15,06,891	2,521	1,80,846				
4.2	1500 x 2100mm(Double leaf) Equal	66	Nos.	37486	24,74,076	4,942	3,26,172				
5	View panels										
	Flush view/Glazing panels on wall designed to fitflus into wall panel with 6 mm thk safety glasses Size: 1100 mm x 1000mm x 100mm	55	Nos.	5750	3,16,250	690	37,950	Allow monitoring of processes without the need to enter the clean room, reducing contamination risk. Maintain the integrity of the cleanroomenvironment with double-glazed, sealed construction. Enhancesafety by providing visibility for personnel movement.	Ms.IPMSEngineers Pvt.Ltd	09-01-2025	180 days
6	Miscellaneous items such as covings, return air risers, Cutouts in wall and ceilings,door interlocks, C flashing for cutouts etc	1	Lot	965572	9,65,572	1,15,869	1,15,869		Ms.IPMSEngineers Pvt.Ltd	09-01-2025	180 days
TOTAL					2,23,09,009		27,07,654				



COSTING-PROCESS EQUIPMENTS

Sr.No.	Equipment Name	Capacity	UCM	Qty	Rate	Total Cost	Purpose	Quotations	Date of Quotation	Validity of Quotation
1	Material Lift	2	Ton	1	22,00,000	22,00,000	Ensures safe and efficient movement of raw materials and finished goods while preventing contamination.	M/s. IPMS Engineers Pvt.Ltd	09-01-2025	180 days
2	Cone Mill with Non FLP motor & Electricals, provided with screen of 2 mm	300	kg/hr	1	13,91,500	13,91,500	Ensures consistent quality, solubility, and bioavailability of products.	M/s. IPMS Engineers Pvt.Ltd	09-01-2025	180 days
3	SS 316 Intermediate Product Container With detachable trolley having PU Coated castor NylonW heel	250	Lit	2	1,81,500	3,63,000	Enables hygienic and contamination-free movement of materials between processes.	M/s. IPMS Engineers Pvt.Ltd	09-01-2025	180 days
4	IBC Bin Product Parts SS-316 Other SS 304 2. Fully operable butterfly valve at outlet 3. Finish - Internal Mirror, External Matt 4. Provided with detachable trolley with PU Coated castor Nylon W heel	1250	Lit	1	7,59,000	7,59,000	Enables hygienic and contamination-free movement of materials between processes.	M/s. IPMS Engineers Pvt.Ltd	09-01-2025	180 days
5	IBC Bin Product Parts SS-316 Other SS 304 2. Fully operable butterfly valve at outlet 3. Finish - Internal Mirror, External Matt 4. Provided with detachable trolley with PU Coated castor Nylon W heel	1250	Lit	2	7,59,000	15,18,000	Enables hygienic and contamination-free movement of materials between processes.	M/s. IPMS Engineers Pvt.Ltd	09-01-2025	180 days
6	SS 316 Intermediate Product Container With detachable trolley having PU Coated castor NylonW heel	650	Lit	2	3,52,000	7,04,000	Enables hygienic and contamination-free movement of materials between processes.	M/s. IPMS Engineers Pvt.Ltd	09-01-2025	180 days
7	Bin Blender - Roller Type – GMP Model Single Column Mounted Support complete with Drive Unit and carriage for having, a) Built in Hydraulic Operated lifting arrangement b) Control Panel, AC Drive etc. (With out Bins) c) Service Floor Mounted MCC Panel in Powder coated enclosure and Operator console Manufacturing area mounted in SS 304 d) Finish - Internal Mirror, External Mat e) Non FLP Motor, Electricals and Control panel.	2000	Lit	1	63,36,000	63,36,000	Ensures uniformity and homogeneity of product blends.	M/s. IPMS Engineers Pvt.Ltd	09-01-2025	180 days
8	SS 316 Intermediate Product Container With detachable trolley having PU Coated castor NylonW heel	250	Lit	2	1,81,500	3,63,000	Enables hygienic and contamination-free movement of materials between processes.	M/s. IPMS Engineers Pvt.Ltd	09-01-2025	180 days
9	IBC Bin Product Parts SS-316 Other SS 304 2. Fully operable butterfly valve at outlet 3. Finish - Internal Mirror, External Matt 4. Provided with detachable trolley with PU Coated castor Nylon W heel	1250	Lit	2	7,59,000	15,18,000	Enables hygienic and contamination-free movement of materials between processes.	M/s. IPMS Engineers Pvt.Ltd	09-01-2025	180 days



COSTING-PROCESS EQUIPMENTS

Sr.No.	Equipment Name	Capacity	UOM	Qty	Rate	Total Cost	Purpose	Quotations	Date of Quotation	Validity of Quotation
10	Fluid Bed Processor - CGMP with vertical explosion and explosion duct extension upto the service floor, having standard electricals and standard motor and the following features : a) Insulated APU with tri-level filtration using 10 microns for air filtration, 3 microns for secondary air filtration and 0.3 micron for final air filtration through HEPA with differential pressure gauges and radiator coil for steam heating. b) Blower with standard electricals c) Online slapping device d) Pneumatically operated bag shaking arrangement. e) 1 No. product container with air distribution plate - perforated screen. f) Exhaust filter plenum with police filter - EU - 7 and HEPA filter in M.S. painted casing before blower. Insulated with cover.	120	kg	1	64,20,000	64,20,000	Enhances granule characteristics, ensuring better compression and product stability.	M/s. IPMS Engineers Pvt.Ltd	09-01-2025	180 days
11	Solution Manufacturing Vessel : a) Cylindrical vessel with conical bottom - 125 Ltrs capacity. Jacket & Insulator b) Pneumatically Operated Stirrer c) The loading would be done Manually. d) Non FLP Motor and Electricals.	125	Lit	1	5,06,000	5,06,000	Critical for producing syrups, suspensions, or coating solutions.	M/s. IPMS Engineers Pvt.Ltd	09-01-2025	180 days
12	SS 316 Intermediate Product Container With detachable trolley having PU Coated castor NylonW heel	650	Lit	1	3,52,000	3,52,000	Enables hygienic and contamination-free movement of materials between processes.	M/s. IPMS Engineers Pvt.Ltd	09-01-2025	180 days
13	Automatic Capsule Filling Machine with line machine	25000	Cap/hr	1	45,54,000	45,54,000	Ensures precise dosing and efficient capsule filling.	M/s. Captech Systems	30-12-2024	180 days
14	Pouch Packing Machine (Powder)	30-35	1kg Pouch/min	1	55,08,000	55,08,000	Ideal for single-serve or bulk pouch packaging.	M/s. Pakona Engineers (I) Pvt.Ltd	03-01-2025	190 days
15	Jar/ Container Packing Machine (Powder)	40-45	1kg Jar/min	1	1,22,00,000	1,22,00,000	Used for packing nutritional powders like protein supplements in jars.	M/s. Pakona Engineers (I) Pvt.Ltd	03-01-2025	190 days
16	Pouch Packing Machine (Powder)	35-40	0.5kg Pouch/min	1	46,33,000	46,33,000	Ideal for single-serve or bulk pouch packaging.	M/s. Pakona Engineers (I) Pvt.Ltd	03-01-2025	190 days
17	Pouch Packing Machine (Powder)	55-60	0.1kg Pouch/min	1	27,50,000	27,50,000	Provides precise dosing for single-use sachets, commonly used for OTC products.	M/s. IPMS Engineers Pvt.Ltd	09-01-2025	180 days
TOTAL						5,20,76,500				



COSTING-UTILITY EQUIPMENTS

Sr. No	Equipment	Qty	Unit	Capacity	UON	Supply Rate	Supply Amour	Installation Rate	Installation Amount	Purpose	Quotations	Date of Quotation	Validity of Quotation
1	Air Compressor	2	Nos.	100	CFM	1050000	21,00,000	52,500	1,05,00	Ensures reliable operation of machinery and utilities while meeting GMP requirements for compressed air quality.	M/s.IPMSEngineers Pvt.Ltd	09-01-2025	180 days
2	Wet Air Receiver	2	Nos.	3	M3	6,90,000	13,80,000	70,000	1,40,000	Protects downstream equipment and improves the efficiency of air drying processes.Ensures compliance with cleanroom and product quality standards by delivering dry, contaminant-free air.Enhances system efficiency and provides a ready supply of dry air for continuous operations.	M/s.IPMSEngineers Pvt.Ltd	09-01-2025	180 days
3	Air Dryer	2	Nos.	100	CFM								
4	Dry Air Receiver	2	Nos.	3	M3								
5	Pump (Centrifugal) (Working)	1	Nos.	20 @25MW	m3/f								
6	Pump (Centrifugal) (Standby)	1	Nos.	20 @25MW	m3/f	105000	1,05,000	5,250	5,250	Ensures efficient and reliable movement of fluids critical for manufacturing and utility operations.	M/s.IPMSEngineers Pvt.Ltd	09-01-2025	180 days
7	Pump (Centrifugal) (Working)	1	Nos.	20 @25MW	m3/f	105000	1,05,000	5,250	5,250				
8	Pump (Centrifugal) (Standby)	1	Nos.	20 @25MW	m3/f	105000	1,05,000	5,250	5,250				
7	Modular tank for Fire/Water	2	Nos.	75	KL	450000	9,00,000	22,500	45,000				
8	ETP	1	Nos.	-	-	3650000	36,50,000	3,65,000	3,65,000	Ensures environmental compliance by reducing the impact of effluents. Promotes sustainability and minimizes risks of contamination to water bodies.	M/s.IPMSEngineers Pvt.Ltd	09-01-2025	180 days
Total							84,50,000		6,76,00				



COSTING-HVAC SYSTEM

Sr.No	ITEM DESCRIPTION	QTY	UNIT	Supply Rate	Supply Amount	Installation R	Installation Amount	Purpose	Quotations	Date of Quotation	Validity of Quotation
1	AIR HANDLING UNITS double skin sandwich-insulated, single blower Clean Room AHUs shall be suitable for Class 100000 application wherever applicable.							Centralized units that condition and circulate air as part of the HVAC system.	M/s. IPMS Engineers Pvt.Ltd	09-01-2025	180days
1.1	AHU-01 CAPACITY 5300 CFM	1	Nos.	4,48,664	4,48,664	21,27	21,27				
1.2	AHU-02 CAPACITY 7000 CFM	1	Nos.	5,92,574	5,92,574	28,10	28,10				
1.3	AHU-03 CAPACITY 9500 CFM	1	Nos.	8,04,201	8,04,201	38,13	38,13				
1.4	AHU-04 CAPACITY 4800 CFM	1	Nos.	4,06,334	4,06,334	19,26	19,26				
1.5	AHU-05 CAPACITY 4800 CFM	1	Nos.	4,06,334	4,06,334	19,26	19,26				
1.6	AHU-06 CAPACITY 7900 CFM	1	Nos.	6,68,754	6,68,754	31,71	31,71				
1.7	AHU-07 CAPACITY 7900 CFM	1	Nos.	6,68,754	6,68,754	31,71	31,71				
1.8	AHU-08 CAPACITY 3200 CFM	1	Nos.	2,70,888	2,70,888	12,84	12,84				
1.9	AHU-09 CAPACITY 7900 CFM	1	Nos.	6,68,754	6,68,754	31,71	31,71				
1.10	AHU-10 CAPACITY 7900 CFM	1	Nos.	6,68,754	6,68,754	31,71	31,71				
1.11	AHU-11 CAPACITY 3200 CFM	1	Nos.	2,70,888	2,70,888	12,84	12,84				
1.12	AHU-12 CAPACITY 11100 CFM	1	Nos.	9,31,184	9,31,184	44,15	44,15				
1.13	AHU-13 CAPACITY 11100 CFM	1	Nos.	9,31,184	9,31,184	44,15	44,15				
2	Ventilation Units with Single Skin Cabinet Type, single phase Inline Fan unit with Provision for Self supporting arrangement (Supply + Exhaust)							Provide fresh air and remove contaminants from non-classified or general areas.	M/s. IPMS Engineers Pvt.Ltd	09-01-2025	180days
2.1	VS-01 CAPACITY 20500 CFM	1	Nos.	5,16,191	5,16,191	25,09	25,09				
2.2	VS-01 CAPACITY 10000 CFM	1	Nos.	3,14,754	3,14,754	15,29	15,29				
3	Supply & Installation of Ducted indoor + Outdoor units, with multi scroll compressors							Compact HVAC systems for localized cooling and heating.	M/s. IPMS Engineers Pvt.Ltd	09-01-2025	180days
3.1	Min. TR requirement: 12.6 TR	1	Nos.	5,17,754	5,17,754	45,75	45,75				
3.2	Min. TR requirement: 10.9 TR	1	Nos.	5,17,754	5,17,754	78,20	78,20				
3.3	Min. TR requirement: 4.2 TR	1	Nos.	3,02,911	3,02,911	78,20	78,20				
4	Supply & Installation of Split AC Units outdoor + indoor units With Cordless Remote Controller							Compact HVAC systems for localized cooling and heating.	M/s. IPMS Engineers Pvt.Ltd	09-01-2025	180days
4.1	Min. TR requirement: 1.3 TR	1	Nos.	96,804	96,804	8,91	8,91				
4.2	Min. TR requirement: 1.5 TR	1	Nos.	1,06,244	1,06,244	8,91	8,91				
4.3	Min. TR requirement: 1.7 TR	2	Nos.	1,22,774	2,45,548	8,91	17,83				
4.4	Min. TR requirement: 2.0 TR	3	Nos.	1,41,564	4,24,702	8,91	26,74				
5	Supply & Installation Outdoor units, with multi scroll compressors for AHU							Independent cooling systems for localized use.	M/s. IPMS Engineers Pvt.Ltd	09-01-2025	180days
5.1	AHU-01 CAPACITY-9TR	1	Nos.	2,01,034	2,01,034	30,36	30,36				
5.2	AHU-02 CAPACITY-12.4TR	1	Nos.	2,76,254	2,76,254	41,72	41,72				
5.3	AHU-03 CAPACITY-15.3TR	1	Nos.	3,42,354	3,42,354	51,71	51,71				
5.4	AHU-04 CAPACITY-6.2TR	1	Nos.	1,38,524	1,38,524	20,92	20,92				
5.5	AHU-05 CAPACITY-3.7TR	1	Nos.	82,094	82,094	12,40	12,40				
5.6	AHU-06 CAPACITY-13.8 TR	1	Nos.	3,08,584	3,08,584	46,61	46,61				
5.7	AHU-07 CAPACITY-11.8TR	1	Nos.	2,63,364	2,63,364	39,78	39,78				
5.8	AHU-08 CAPACITY-5.1TR	1	Nos.	1,14,364	1,14,364	17,27	17,27				
5.9	AHU-09 CAPACITY-11.9TR	1	Nos.	2,66,044	2,66,044	40,18	40,18				
5.10	AHU-10 CAPACITY-12.2TR	1	Nos.	2,73,034	2,73,034	41,24	41,24				
5.11	AHU-11 CAPACITY-5.4TR	1	Nos.	1,20,114	1,20,114	18,14	18,14				
5.12	AHU-12 CAPACITY-16.7TR	1	Nos.	3,73,804	3,73,804	56,46	56,46				
5.13	AHU-13 CAPACITY-18.9TR	1	Nos.	4,21,824	4,21,824	63,71	63,71				



COSTING-HVAC SYSTEM

Sr.No	ITEM DESCRIPTION	QTY	UNIT	Supply Rate	Supply Amount	Installation Ra	Installation Amount	Purpose	Quotations	Date of Quotation	Validity of Quotation
6	Supply & Installation of Seamless heavy gauge Copper piping, of adequate size duly insulated with nitrile insulation of adequate thickness . (Supply + Return). Refnet joint with Linea expansion valve and necessary accessories .Charge of refrigerant Gas R410/R407 as per Copper pipe routing.	1	Lot	18,24,91	18,24,91	8,26,896	8,26,896	Transports refrigerant between the condenser and evaporator.	M/s. IPMS Engineers Pvt.Ltd	09-01-2025	180days
7	AHU Expansion Kit							Facilitates AHU integration with HVAC systems.	M/s. IPMS Engineers Pvt.Ltd	09-01-2025	180days
7.1	AHU-01 CAPACITY-9TR	1	Ncs.	46,41	46,41	10,98	10,98				
7.2	AHU-02 CAPACITY-12.4TR	1	Ncs.	63,78	63,78	15,10	15,10				
7.3	AHU-03 CAPACITY-15.3TR	1	Ncs.	79,04	79,04	18,71	18,71				
7.4	AHU-04 CAPACITY-6.2TR	1	Ncs.	31,98	31,98	7,57	7,57				
7.5	AHU-05 CAPACITY-3.7TR	1	Ncs.	18,95	18,95	4,48	4,48				
7.6	AHU-06 CAPACITY-13.8 TR	1	Ncs.	71,24	71,24	16,86	16,86				
7.7	AHU-07 CAPACITY-11.8TR	1	Ncs.	60,80	60,80	14,39	14,39				
7.8	AHU-08 CAPACITY-5.1TR	1	Ncs.	26,40	26,40	6,25	6,25				
7.9	AHU-09 CAPACITY-11.9TR	1	Ncs.	61,42	61,42	14,54	14,54				
5.10	AHU-10 CAPACITY-12.2TR	1	Ncs.	63,03	63,03	14,92	14,92				
5.11	AHU-11 CAPACITY-5.4TR	1	Ncs.	27,73	27,73	6,56	6,56				
5.12	AHU-12 CAPACITY-16.7TR	1	Ncs.	86,30	86,30	20,43	20,43				
5.13	AHU-13 CAPACITY-18.9TR	1	Ncs.	97,39	97,39	23,05	23,05				
8	Supply & Installation of Ducting with M.S. Angle Flanges, Food Grade Rubber Gasket to be used between MS flange. All Necessary duct support are part of the Duct Installation.							Transports conditioned air between the AHU and cleanrooms.	M/s. IPMS Engineers Pvt.Ltd	09-01-2025	180days
8.1	24G thick duct	2500	Sq.m	1,39	34,80,00	76	19,00,00				
8.2	22G thick duct	300	Sq.m	1,70	5,11,800	76	2,28,000				
8.3	20G thick duct	300	Sq.m	1,97	5,91,300	76	2,28,000				
9	Ducting Insulation including all accessories.							Minimizes heatloss or gain during air transport.	M/s. IPMS Engineers Pvt.Ltd	09-01-2025	180days
9.1	Supply air duct insulation	925	Sq.m	1,11	10,30,45	48	4,52,325				
9.2	Return air duct insulation	925	Sq.m	88	8,14,000	48	4,52,325				
10	Al. Epoxy Powder Coated Supply/ Return Air Ceiling Diffusers of powder coated aluminum construction.	1	Lot	11,92,48	11,92,48	1,77,896	1,77,896	Distributes supply and return air evenly in cleanrooms.	M/s. IPMS Engineers Pvt.Ltd	09-01-2025	180days
10.1	610 mm x610 mm filter face area										
10.2	450 mm x450 mm filter face area										
11	Extruded Aluminum Low Leakage Aerofoil Design Volume Control Dampers suitable for Manual & Motorised operation.	1	Lot	1,98,500	1,98,500	59,550	59,550	Regulate airflow within ducts.	M/s. IPMS Engineers Pvt.Ltd	09-01-2025	180days
12	Fire Dampers shall meet the fire resistance rating of 2 hours shall be tested and certified by CBRI. Fusible link	1	Lot	2,06,464	2,06,464	23,344	23,344	Prevent fire and smoke from spreading through ducts.	M/s. IPMS Engineers Pvt.Ltd	09-01-2025	180days
13	Drain piping, Etc.	1	Lot	1,04,223	1,04,223	27,311	27,311	Removes condensate from HVAC systems.	M/s. IPMS Engineers Pvt.Ltd	09-01-2025	180days
14	AHU Panel with Electrical apparatus & Components of Suitable Range as Isolator, Starter.	1	Lot	20,47,27	20,47,27	1,26,470	1,26,470	Supply and manage power for AHUs and ventilation systems.	M/s. IPMS Engineers Pvt.Ltd	09-01-2025	180days
15	Power Panels for Ventilation Supply & Exhaust	1	Lot	81,242	81,242	9,729	9,729	Supply and manage power for AHUs and ventilation systems.	M/s. IPMS Engineers Pvt.Ltd	09-01-2025	180days
16	Supply of Duct Mounted finned tube type Electrical Heater.	1	Lot	4,85,313	4,85,313	50,000	50,000	Provide heating to maintain or achieve desired temperatures.	M/s. IPMS Engineers Pvt.Ltd	09-01-2025	180days

COSTING-HVAC SYSTEM

Sr.No	ITEM DESCRIPTION	QTY	UNIT	Supply Rate	Supply Amount	Installation Rate	Installation Amount	Purpose	Quotations	Date of Quotation	Validity of Quotation
17	AHU Controls including - Duct Mounted Temp & RH Sensor - Magnetic Gauges 0-60 Pato be installed across AHU Filter. - Duct Mounted Velocity Sensor	1	Lot	5,96,245	5,96,245	29,12	29,12	Monitor and control temperature, humidity, and airflow.	M/s. IPMS Engineers Pvt.Ltd	08-01-2025	180days
18	Validation, Documentation & Testing of HVAC System	1	Lot		-	1,23,91	1,23,91	Ensure systems meet regulatory and performance requirements.	M/s. IPMS Engineers Pvt.Ltd	08-01-2025	180days
TOTAL					2,78,60,00		60,41,2				



COSTING-ELECTRICAL SYSTEM

Sr. No	Description	Unit	Qty	Supply Rate	Supply Amount	Installation Rate	Installation Amount	Purpose	Quotations	Date of Quotation	Validity of Quotation
1	MV SYSTEM										
1.1	11kV Metering Cubicle	Nd	1	4,20,00	4,20,00	22,50	22,50	Distributes electricity from the utility source to step-down transformers for plant use.	M/s. IPMS Engineers Pvt.Ltd	09-01-2025	180days
1.2	11kV Compact Substation	Nd	1	33,60,00	33,60,00	60,00	60,00				
1.3	HT Cable 185 Sq.mm	Mtr	20	1,63	32,76	450	9,00				
1.4	Indoor termination kit	Nd	3	11,05	33,15	7,50	22,50				
1.5	Outdoor termination kit	Nd	1	11,05	11,05	7,50	7,50				
1.5	CU Earthpit	Nd	10	11,70	1,17,00	4,50	45,00				
1.6	25 X 6 Cu Strip	Mtr	40	1,38	55,32	6	2,72				
1.7	32 X 6 Cu strip	Mtr	30	2,63	78,99	120	3,60				
1.8	32 X 6 GI Strip	Mtr	30	25	7,62	120	3,60				
1.9	Electricity Board Approval	L.S	1			4,50,00	4,50,00				
2	LV SYSTEM										
2.1	LV MCC/PCC							Distributes power at lower voltages (e.g., 415V or 230V) to equipment and lighting systems.	M/s. IPMS Engineers Pvt.Ltd	09-01-2025	180days
2.1.1	MAIN LT PANEL	Nd	1	9,37,04	9,37,04	12,75	12,75				
2.1.2	APFC PANEL	Nd	1	5,34,30	5,34,30	12,00	12,00				
2.1.3	Process Panel	Nd	1	5,40,78	5,40,78	10,50	10,50				
2.1.4	HVAC Panel	Nd	1	5,08,75	5,08,75	11,25	11,25				
2.2	Distribution Boards										
2.2.1	LDB	No	2	22,40	44,80	2,25	4,50				
2.2.2	PDB	No	3	30,53	91,59	2,25	6,75				
2.2.3	UPSDB	Nd	2	27,07	54,15	2,25	4,50				
2.2.4	Ex Area DB	Nd	1	18,74	18,74	2,25	2,25				
2.2.5	Main UPSDB	Nd	1	14,60	14,60	2,25	2,25				
3	UPS & Battery Bank										
3.1	UPS (20kVA)	Nd	1	3,90,00	3,90,00	13,50	13,50	Provides backup power during outages or power fluctuations to prevent disruptions.	M/s. IPMS Engineers Pvt.Ltd	09-01-2025	180days
3.2	Battery Bank with Rack	Nd	1	1,95,00	1,95,00	1,50	1,50				
3.3	Isolators	Nd	3	5,00	15,01	1,50	4,50				
3.4	Cable	Mtr	20	1,25	25,18	109	2,10				
4	Cables	Lot	1	27,24,57	27,24,57	8,74,98	8,74,98	Transmit electrical power and signals between equipment and systems.	M/s. IPMS Engineers Pvt.Ltd	09-01-2025	180days
5	Cable Termination	Lot	1	2,41,57	2,41,57	1,05,66	1,05,66	Provides secure connections at the ends of cables to avoid loose or faulty connections.	M/s. IPMS Engineers Pvt.Ltd	09-01-2025	180days
6	Cable Tray & Cover	Lot	1	8,40,67	8,40,67	2,62,44	2,62,44	Supports and organizes cables to protect them from damage.	M/s. IPMS Engineers Pvt.Ltd	09-01-2025	180days
7	Conduit & Accessories	Lot	1	73,51	73,51	64,12	64,12	Protect and route electrical wiring, especially in harsh environments.	M/s. IPMS Engineers Pvt.Ltd	09-01-2025	180days

COSTING-ELECTRICAL SYSTEM


Sr. No	Description	Unit	Qty	Supply Rate	Supply Amount	Installation Rate	Installation Amount	Purpose	Quotations	Date of Quotation	Validity of Quotation
8	Earthing & Lightning System	Lot	1	13,37,91	13,37,91	17,05	17,05	Safeguards the facility and personnel by dissipating fault currents and lightning strikes safely to the ground.	M/s. IPMS Engineers Pvt.Ltd	09-01-2025	180days
9	Lighting System	Lot	1	18,12,48	18,12,48	1,88,70	1,88,70		M/s. IPMS Engineers Pvt.Ltd	09-01-2025	180days
10	Power Socket	Lot	1	5,38,31	5,38,31	75,82	75,82	Provide access points for connecting equipment and devices to the power supply.	M/s. IPMS Engineers Pvt.Ltd	09-01-2025	180days
11	Internal Wiring	Lot	1	17,63,84	17,63,84	18,45,45	18,45,45	Connects all electrical components within the facility.	M/s. IPMS Engineers Pvt.Ltd	09-01-2025	180days
12	Local Control Station	No	10	1,23	12,35	450	4,50	Allows manual operation and monitoring of equipment.	M/s. IPMS Engineers Pvt.Ltd	09-01-2025	180days
13	Electrical Miscellaneous & Safety Accessories	Lot	1	1,04,65	1,04,65	9,75	9,75	Includes fuses, circuit breakers, and surge protection devices.	M/s. IPMS Engineers Pvt.Ltd	09-01-2025	180days
14	Structural Steel & Fabrications	Td	2	84,50	1,69,00	37,50	75,00	Provides support structures for electrical equipment and cable management systems.	M/s. IPMS Engineers Pvt.Ltd	09-01-2025	180days
15	Fire Alarm System	Lot	1	11,78,71	11,78,71	1,78,65	1,78,65	Detects and alerts occupants to fire hazards.	M/s. IPMS Engineers Pvt.Ltd	09-01-2025	180days
16	CCTV System	Lot	1	12,58,45	12,58,45	1,71,12	1,71,12	Monitors and records activities for security and process observation.	M/s. IPMS Engineers Pvt.Ltd	09-01-2025	180days
17	Access Control & Door Interlock System	Lot	1	3,17,87	3,17,87	1,61,25	1,61,25	Manages and restricts access to sensitive areas.	M/s. IPMS Engineers Pvt.Ltd	09-01-2025	180days
18	LAN & Telephone System	Lot	1	8,44,68	8,44,68	3,61,85	3,61,85	Facilitates communication and data sharing across the facility.	M/s. IPMS Engineers Pvt.Ltd	09-01-2025	180days

COSTING-ELECTRICAL SYSTEM

Sr. No	Description	Un	Qt	Supply Rate	Supply Amount	Installation Rate	Installation Amount	Purpose	Quotations	Date of Quotation	Validity of Quotation
19	PASystem	Lot		5,71,65	5,71,65	90,101	90,10	Broadcasts announcements and emergency messages.	M/s. IPMS Engineers Pvt.Ltd	09-01-2025	180days
TOTAL							2,12,76,14				
							52,01,25				



COSTING-MECHANICAL & PIPING

Sr. No.	DESCRIPTION	QTY.	UNIT	Rate	Total Cost	Purpose	Quotations	Date of Quotation	Validity of Quotation
1	COMPRESSOR PIPES & FITTINGS								
1.1	SS-304 Pipes, ASTM A312 Gr.304, Sch. 10S, Dimensions as per ANSI B 36.19, ERW, Bevelled Ends with all accessories like all fittings including tees, elbows, reducers, union, nipples, flanges, rubber gaskets, nuts bolts, washer etc. Sizes From 15 NB To 50NB	1	Lot	3,25,000	3,25,000	 Delivers compressed air to various equipment and processes. Supports manufacturing, cleaning, and control systems.	M/s. IPMS Engineers Pvt.Ltd	09-01-2025	180days
1.2	GI Pipes, Pipes to IS 1239 part - I, Galvanised, ERW, Heavy, Bevelled end with all accessories like all fittings including tees, elbows, reducers, union, nipples, flanges, rubber gaskets, nuts bolts, washer etc. Sizes From 15 NB To 50NB	1	Lot	90,000	90,000				
1.3	Valves, Accessories and Instruments 1) CS Ball Valves 2) SS304 TC valve 4) CS Non-return Valve	1	Lot	1,25,000	1,25,000				
1.4	Catridge Filters & Misc.	1	Lot	1,50,000	1,50,000				
2	RAW WATER PIPING, FITTINGS & VALVES	1	Lot	2,50,000	2,50,000				
2.1	Supply of Installation of UPVC Piping of following sizes. It includes Installation of all fittings like Elbows, Flanges, Gaskets, Nuts/Bolts, U-clamp as per spec screws and other miscellaneous items required to complete. Also, 1) PP Ball Valves 2) PP Butterfly valve 3) PP Y-Type Strainer 4) PP Non-return Valve 5) PP Foot Valve 6) Water Meter 7) Water Pump					Transports untreated water from the source (e.g., municipal supply, borewell, or reservoir) to the water treatment system. Serves as the primary water supply for utility systems and processes.	M/s. IPMS Engineers Pvt.Ltd	09-01-2025	180days
3	DRAIN PIPING, FITTINGS & VALVES	1	Lot	1,50,000	1,50,000				
3.1	HDPE PIPE with all elbow, Tee, Flanges, Clamp, Nut & Bolt etc. accessories Also, Drain trap PP Ball valve PP NRV Flanged end. Pressure Gauge 0 to 10 bar.					Handles the safe and efficient disposal of wastewater from production, cleaning, and utility systems. Ensures compliance with environmental regulations for waste management.	M/s. IPMS Engineers Pvt.Ltd	09-01-2025	180days
3.2	Submersible sump pump	2	Nos.	60,000	1,20,000				
4	PIPE RACK, PLATFORM & SUPPORT STRUCTURE	1	Lot	1,50,000	1,50,000				
4.1	Supply and installation of MS structure for piperacks which include Beam, channel, angle and MS plates Mechanical Anchor fastener for supports					Provides a structured pathway for the organized routing of multiple utility pipes, including compressed air, raw water, drain water, steam, and other process lines.	M/s. IPMS Engineers Pvt.Ltd	09-01-2025	180days
TOTAL					13,60,000				

COSTING-FIRE PROTECTION SYSTEM

Sr. No.	Description	Qty	Unit	Rate	Total Cost	Purpose	Quotations	Date of Quotation	Validity of Quotation
1	SITC of FIRE PUMPS Including suction & delivery piping with fittings, flanges and Valves like Gate valve, Non Return valve, butterfly valve, Y-type strainer with matching flanges, rubber expansion bellows. Also Air vessel tank of 300NB dia & 1.5 Mtr height with all necessary arrangements.	1	Lot	24,72,77	24,72,77	Fire pumps boost water pressure and ensure an adequate supply to firefighting systems.	M/s. IPMS Engineers Pvt.Ltd	09-01-2025	180days
1.1	SITC of Hydrant Main Electrical motor driven fire pump.								
1.2	SITC of Sprinkler Main Electrical motor driven fire pump								
1.3	SITC of Diesel engine driven of End suction								
1.4	SITC of electrical motor driven Hydrant Jockey pump								
1.5	SITC of electrical motor driven Sprinkler Jockey pump								
2	Fire Hydrant System Including MS ERW Black pipe as per IS 1239, IS 3589 'C' Class pipes & piping components like bend, tee, flanges, Also Double Flanged Gate Valves, Wafer type butterfly valves, "Y" type Strainer, Swing Type non return valves, Hydrants valves Fixed stand post type water monitor as per IS: 8442 monitor Fire Brigade Inlet Connection (4 way each of 63mm diameter Fire water tank Filling Inlet Connection Air Release Valve & Pressure gauges etc.	1	Lot	19,58,57	19,58,57	Provide water to firefighters for manual suppression of large fires	M/s. IPMS Engineers Pvt.Ltd	09-01-2025	180days
3	Sprinkler system Including MS ERW Black pipe as per IS 1239, IS 3589 'C' Class Heavy Duty above ground pipe protection with pipe fittings. Also Alarm control valve, Wafer type butterfly valves, Swing Type non return valves, with matching flanges SITC of Sprinklers, Vanetype Flow switch Air Release Valve & Pressure gauges etc.	1	Lot	21,60,63	21,60,63	Automatically detect and suppress fires in their early stages.	M/s. IPMS Engineers Pvt.Ltd	09-01-2025	180days
4	Fire Extinguishers Supplying of ISI marked & TAC / LPA approved hand held portable type fire Extinguishers with required Discharge valves & nozzle having connecting hose pipes as well as wall mounting / floor mounting brackets / stands trolleys as per specifications & TAC Norms. 6kg capacity ABC type powder fire Extinguishers 4.5 kg CO2 type Extinguisher Foam 9 ltr Extinguisher 6kg clean agent type modular fire extinguisher Also, Fire Buckets 9 Ltrs. Capacity	1	Lot	1,26,77	1,26,77	Provide a portable and immediate solution for extinguishing small fires.	M/s. IPMS Engineers Pvt.Ltd	09-01-2025	180days
GRAND TOTAL					67,18,76				



COSTING-RACKING SYSTEM

Sr. No	Description	Qty	Uni	Rate	Total Cost	Purpose	Quotations	Date of Quotation	Validity of Quotation
1	Design, Supply (Loading, Transportation, Transit insurance, Unloading at site), Installation & Commissioning of Single Deep Steel Racking System for accomodating for 1210 Pallets . As per Drawing shared	136	Nos	3,271	44,65,00	Storage of Primary Packing material, Secondary Packing materials, Raw material, Finish Goods	M/s. Jungheinrich Lift Truck Ltd.	10-01-2025	180days
GRAND TOTAL					44,65,00				



17.2 Consolidated Manpower Plan: Qualifications, Experience, Roles & Responsibilities, and Hiring Timeline by Category

Sr. No.	Position	Nos. of Persons	Minimum Qualification	Minimum Experience	Role / Responsibility	When to Hire
1	Director	2	MBA / M. Pharm / PhD	15–20 years	Strategic leadership, compliance, stakeholder engagement	Project Initiation
2	Technical Manager	1	M.Tech / M.Sc. (Biotech, Food Tech)	12+ years	Technical oversight, inter-department coordination	Design & Development
3	Administrative Manager	1	MBA / PG in Administration	8+ years	Office operations, facility & procurement	Early Execution
4	Production Head	1	B.Pharm / M.Pharm / M.Sc.	12–15 years	Batch execution, production planning	Commissioning
5	Engineering Head	1	B.E./B.Tech (Mech/Electrical)	12+ years	Engineering design, utilities	Design Phase
6	QA Head	1	B.Pharm / B.Sc / M.Pharm / M.Sc.	12–15 years	QA systems, validation, audits	Late Construction
7	QC Head	1	B.Sc / M.Sc (Chemistry/Microbiology)	12–15 years	Testing, stability studies	Commissioning
8	HR Head	1	MBA (HR)	8–10 years	Recruitment, HR policies	Design Phase
9	Accounts Head	1	CA / MBA (Finance)	10+ years	Budgeting, reporting	Project Initiation
10	Production Staffs	25	D.Pharm / B.Sc. / ITI	0–3 years	Line supervision, machine operation	Trial Production
11	Warehouse Staffs	5	B.Com / Diploma in Logistics	2–5 years	Inventory control, dispatch	Execution Phase
12	Mechanical Head	1	B.E. (Mechanical)	12+ years	HVAC, utilities	Design Phase
13	Electrical Head	1	B.E. (Electrical)	12+ years	Power distribution, automation	Design Phase
14	Mechanical Engineers	2	B.E./Diploma (Mechanical)	2–5 years	Equipment maintenance	Execution Phase
15	Electrical Engineers	2	B.E./Diploma (Electrical)	2–5 years	Electrical installations	Execution Phase
16	QA Support Staff	4	B.Sc. / M.Sc.	1–3 years	Documentation, SOP handling	Pre-Validation Phase
17	Wet Chemistry Head	1	B.Sc. / M.Sc. (Analytical Chemistry)	10+ years	Analytical method development	Lab Commissioning
18	Microbiologist	1	B.Sc. / M.Sc. (Microbiology)	7+ years	Microbial testing	Lab Setup Phase
19	QC Support Staff	3	B.Sc. / M.Sc.	1–3 years	Sample collection, lab testing	Lab Commissioning
20	HR Support Staffs	2	BBA / MBA (HR)	1–3 years	Payroll, recruitment coordination	Execution Phase
21	CA	1	Chartered Accountant	5–10 years	Taxation, audit, compliance	Project Initiation
22	Sr. Accountant	1	B.Com / M.Com	5–7 years	Ledger, vendor payments	Early Construction
23	Account Support Staff	2	B.Com	1–3 years	Data entry, invoicing	Execution Phase
24	Miscellaneous	2	As required	1–2 years	Admin support	Execution Phase

Note:

1. Engineering, Technical, and HR Heads are expected to be on boarded in the design and development phase, anticipated in the coming quarter.
2. Remaining technical, production, and support staff will be phased in closer to commissioning, as per project milestones and regulatory clearances.



Timelines

17.3 ENGINEERING TIMELINE

Phase/Task	Time Estimate
Concept Engineering	8-10 weeks
Basic Engineering	18-20 weeks
Detailed Engineering	16-18 weeks

NOTE:

In Concept Engineering, we determine the product range, production capacity, Equipment Location, and space requirements, along with a rough cost estimate. In Basic Engineering, we create plant layouts, define utility requirements, identify necessary machines, and refine the budget. In Detailed Engineering, we finalize the plant design, specify equipment and process flow, ensure compliance with regulations, and plan for procurement.

17.4 EXECUTION TIMELINE

Phase/Task	Time Estimate	Time Estimate in Months
Commencement of Construction	Upon receipt of funds	Mid of June, 2025 – End of June, 2025
Commencement of MEP, HVAC & Fire Protection Works	Approximately 3–4 months post-construction starts	Mid of January, 2026 – End of January, 2026
Completion of Civil Works	Estimated 20-25 weeks	End of May, 2026 – Start of June, 2026
Installation of Equipment's	Estimated 3-4 weeks	Start of June, 2026 – Start of July, 2026
Completion of MEP, HVAC & Fire Protection Works	Estimated 2 weeks	End of June, 2026 – End of July, 2026
Commissioning of Equipments	Estimated 2 weeks	End of July, 2026 – End of August, 2026
Operationalization of the Unit	In Financial Year 2026-2027	End of August, 2026 – Mid of September, 2026

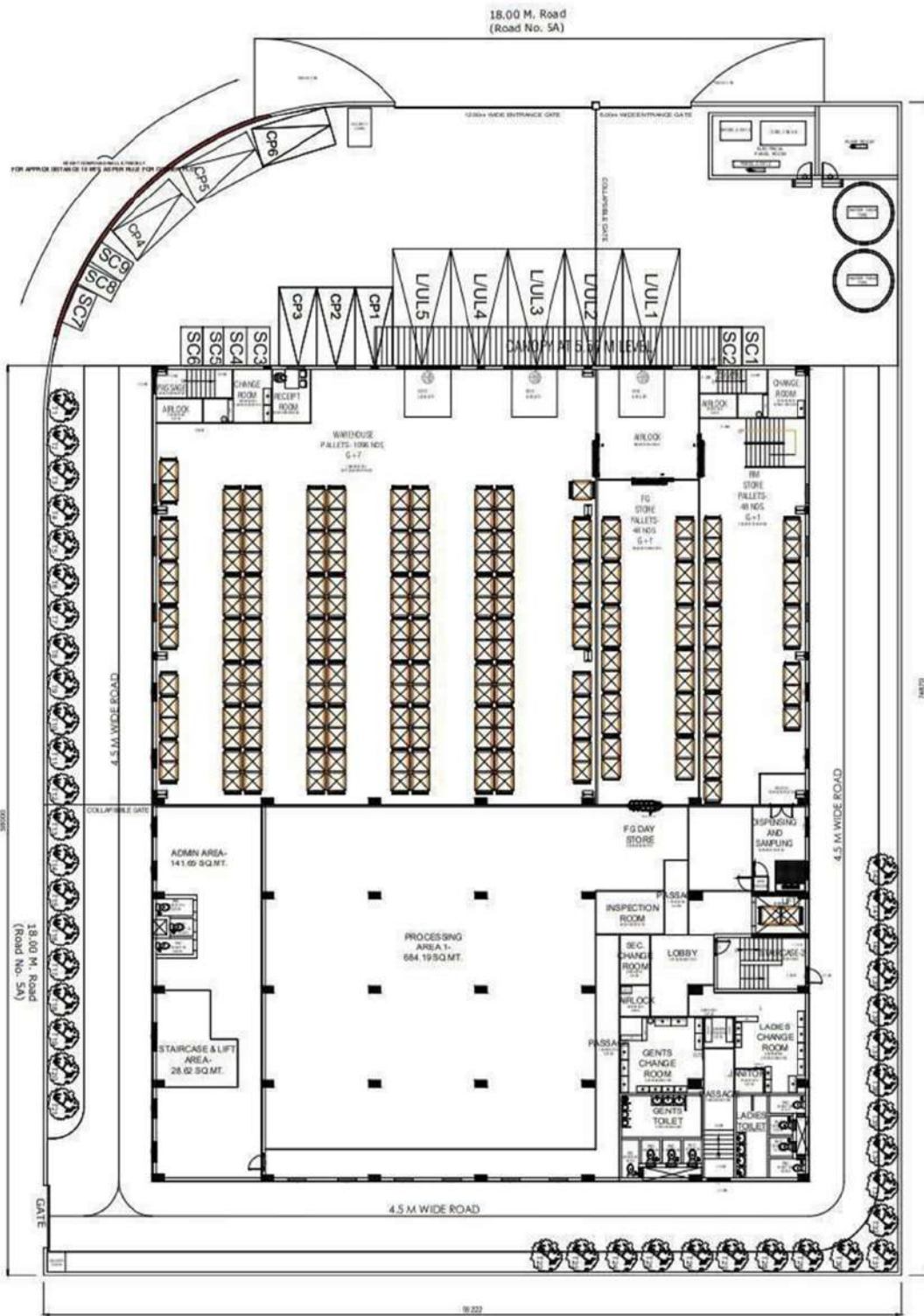


17.5 APPROVALS

Sr. No.	Approval	Authority	Required At	Status
Before Construction				
1	Building Permission	JNPA SEZ	Prior to commencement of construction	Received
2	Consent to establish under the Water (Prevention and Control of Pollution) Act, 1974 and the Air (Prevention and Control of Pollution) Act, 1981	MPCB	Prior to commencement of construction	Received
3	Provisional Fire NOC	JNPA SEZ	Prior to commencement of construction	Received
After Construction				
4	Application for Power	JNPA SEZ	Before Completion	Application to be filed at relevant stage
5	Application for Water	JNPA SEZ	Before Completion	Application to be filed at relevant stage
6	Final Fire NOC	JNPA SEZ	Before Completion	Application to be filed at relevant stage
7	Consent to operate under the Water (Prevention and Control of Pollution) Act, 1974 and the Air (Prevention and Control of Pollution) Act, 1981	MPCB	Before Completion	Application to be filed at relevant stage
8	FDA Approval for Manufacturing	FDA India	Before operations	Once facility is ready
9	FSSAI License for Food Products	FSSAI	Before operations	Once facility is ready



PLOT PLAN



PLOT PLAN

